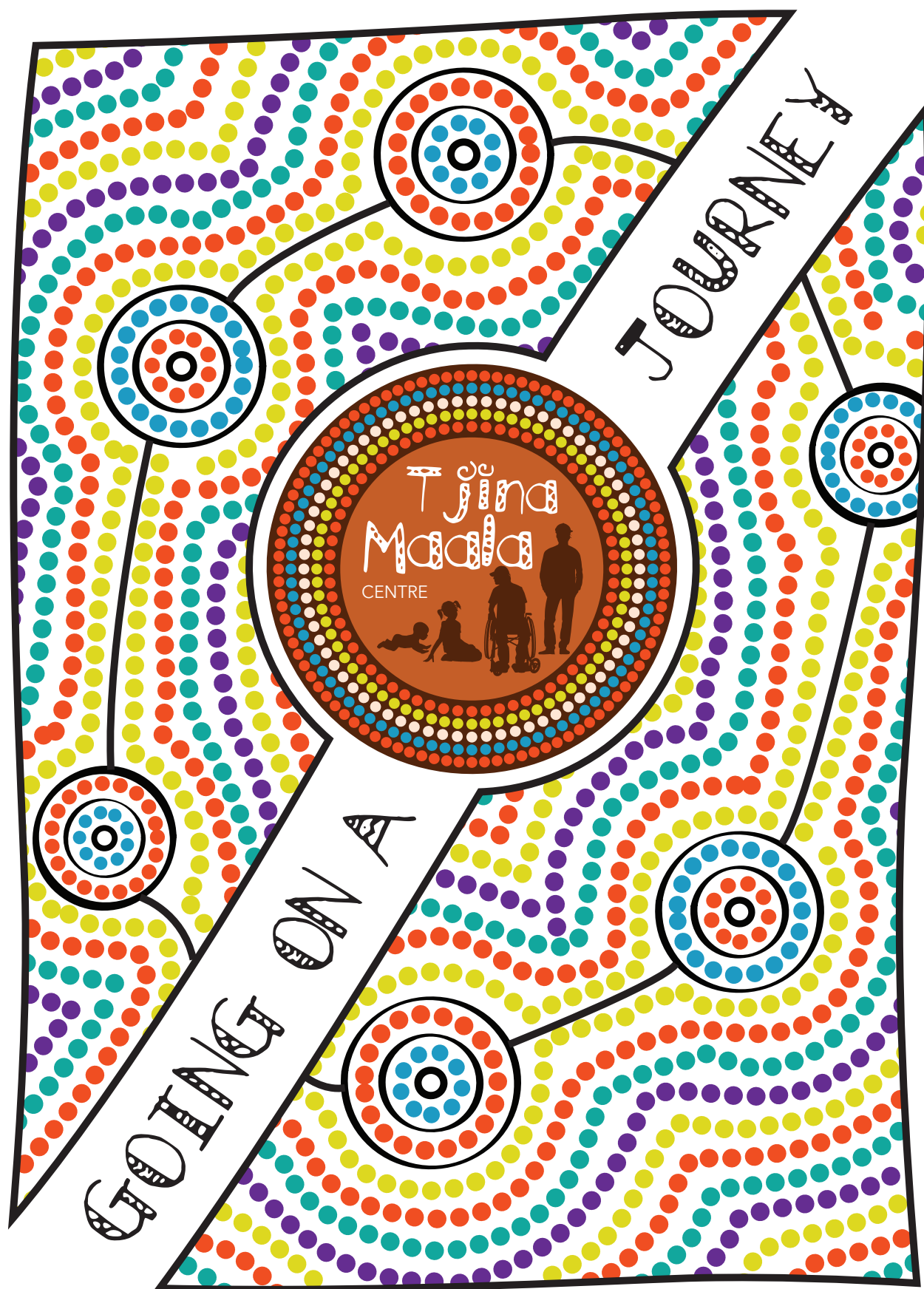


TJINA MAAALA



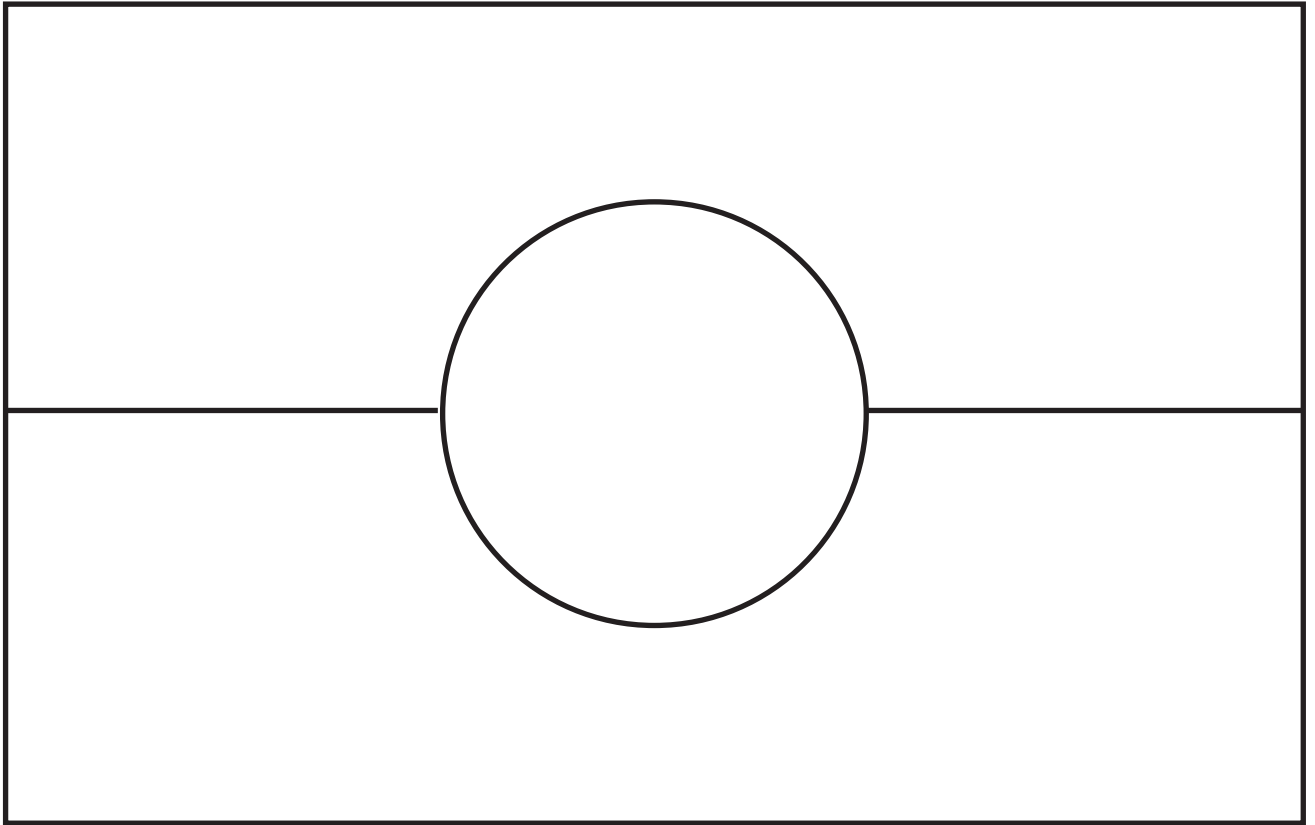
ACTIVITY BOOK

Name: _____

Page

1. Colour in: Aboriginal flag
2. Maze
3. Colour in: Emu
4. Word Sleuth
5. Colour in: Kangaroo
6. Join the Dots
7. Colour in: Witchetty Grub
8. Draw Your Own Picture
9. Body Parts
10. Rhyming Song
11. Colour in: Goanna
12. Quiz
13. Colour in: Honey Ants
14. Colour in: Echidna
15. Sign language
16. Sign language
17. Colour in: Pink & Grey Galah
18. Colour in: Long Meeting Place
19. Answers

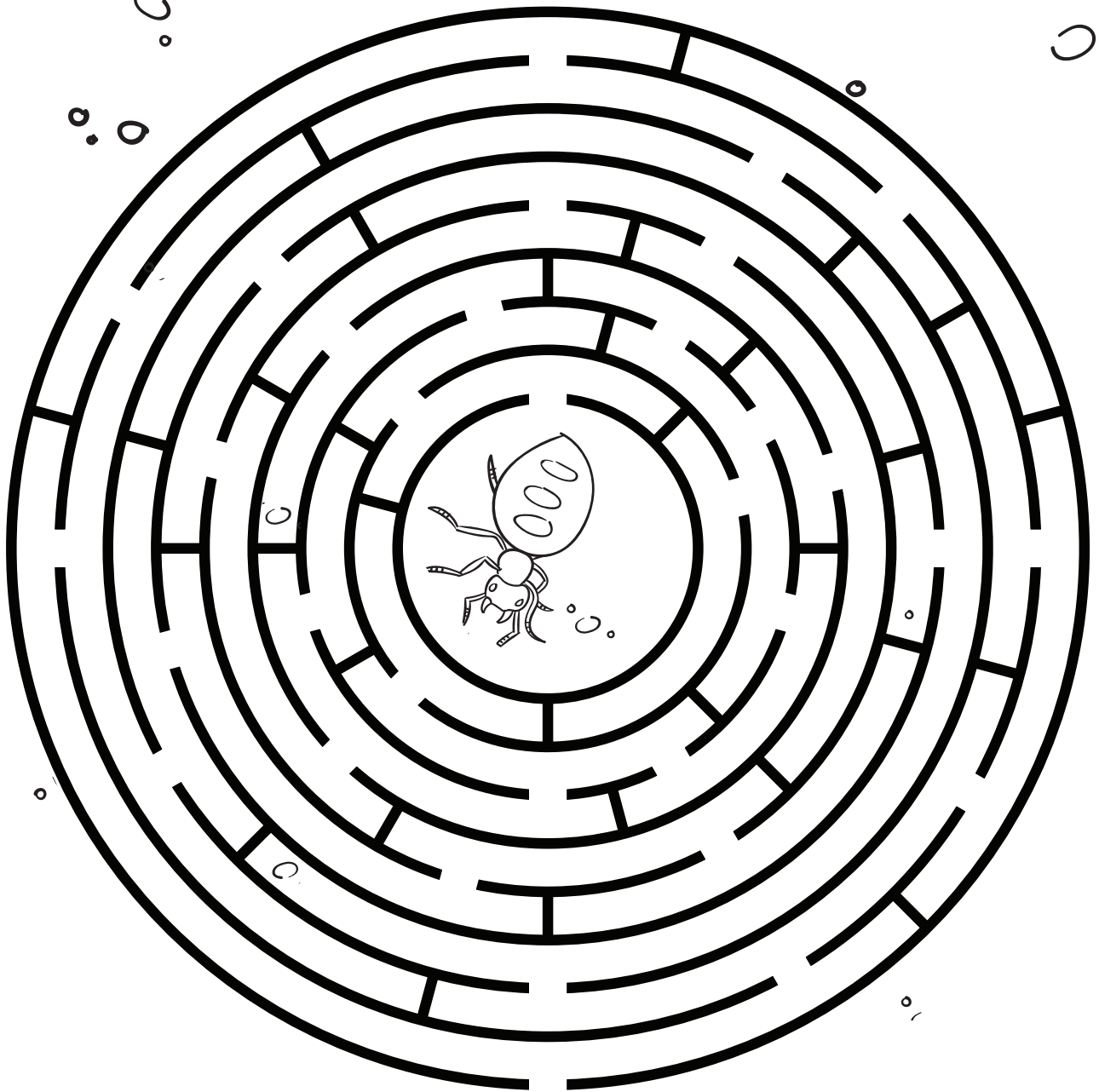
Aboriginal Flag



The **Aboriginal Flag** was designed by Aboriginal artist, Harold Thomas, in 1971.

Black represents the Aboriginal people of Australia.
Yellow circle represents the Sun, the giver of life and protector.
Red represents the red earth, the red ochre used in ceremonies and Aboriginal peoples' spiritual connection to the land

Maze

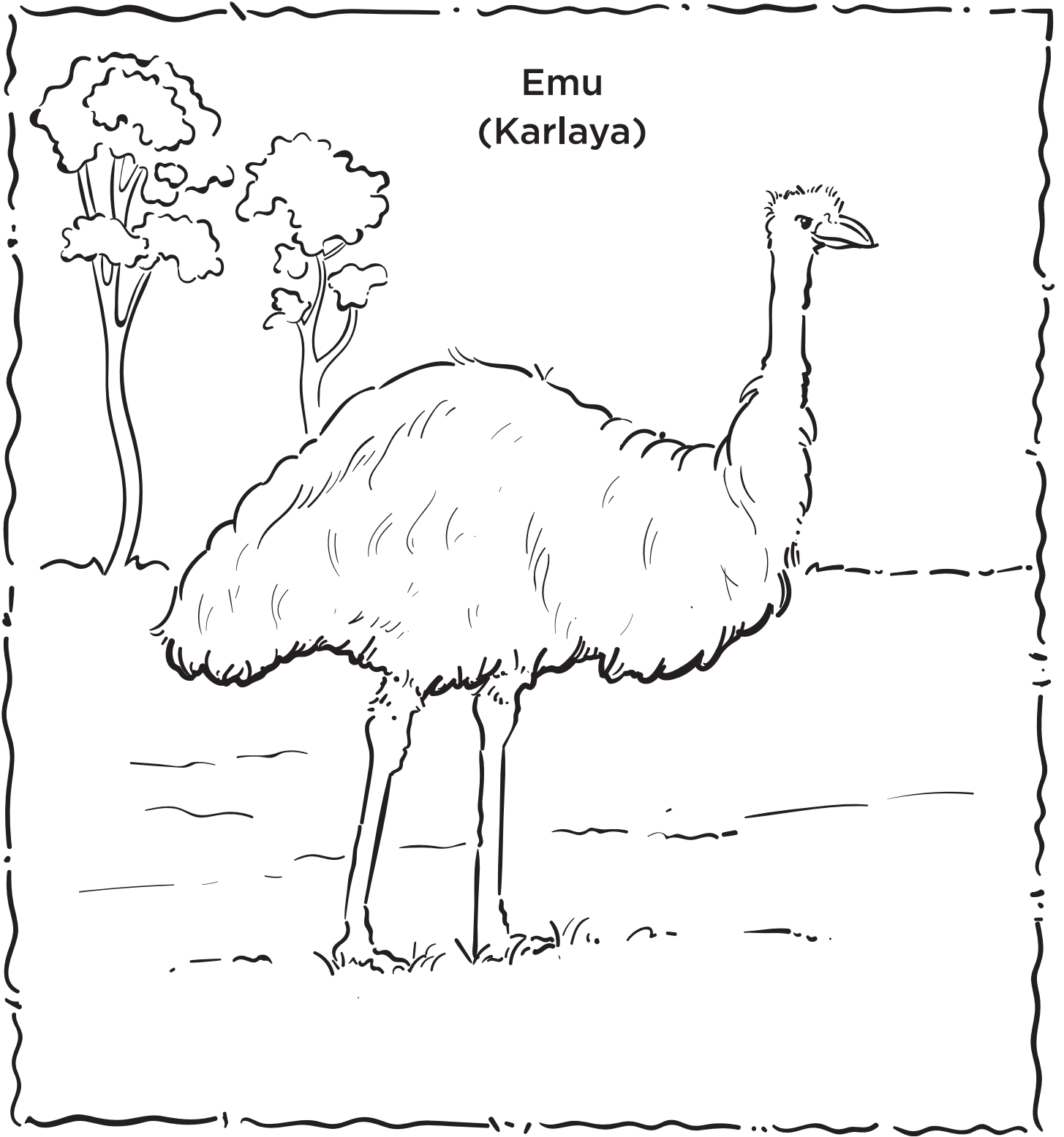


Start here



Help the baby Honey Ant find its mother in the middle of the maze.

Emu (Karlaya)



Do you know any other languages? Add the language and word below.

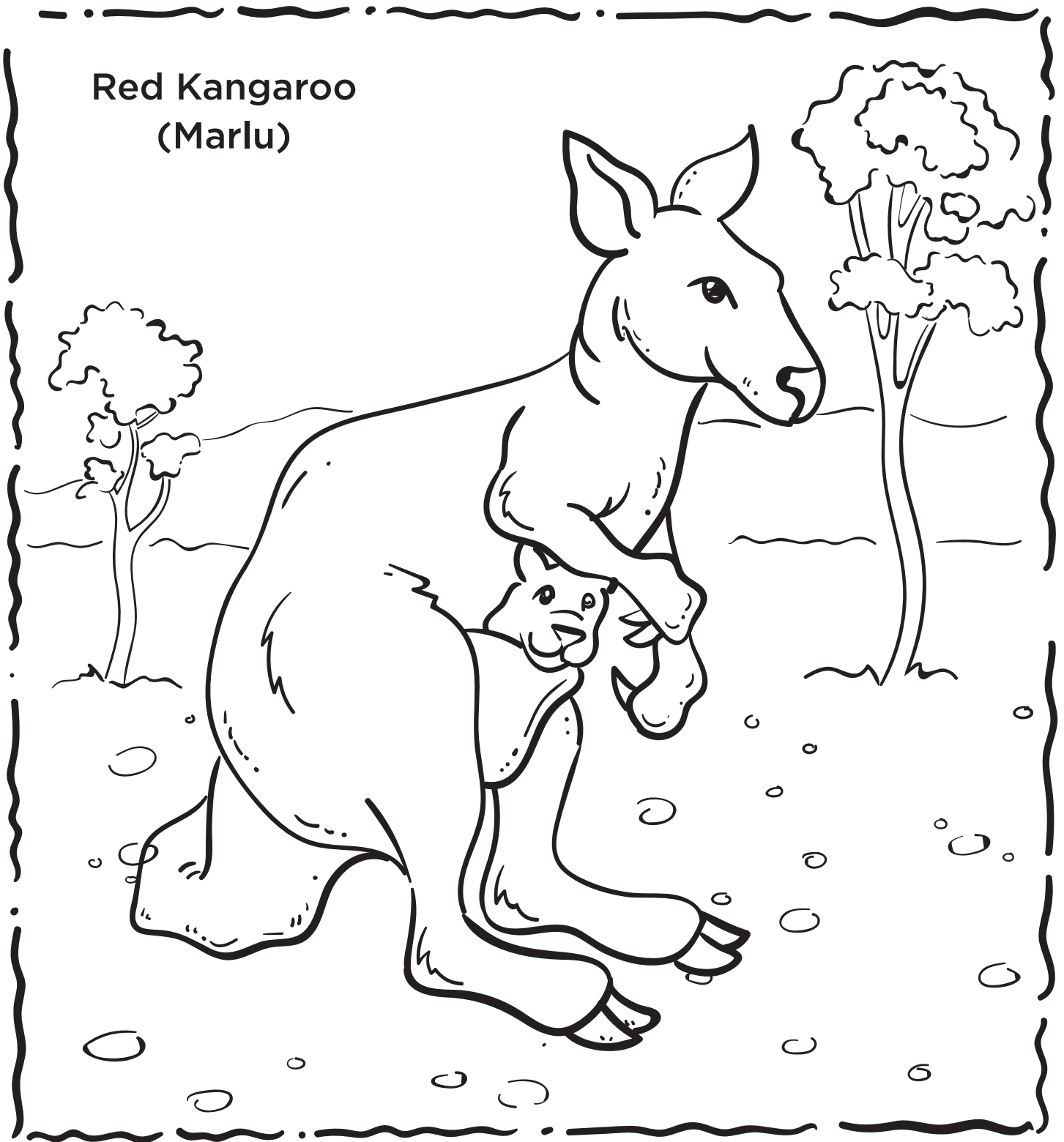
Language	Word
English	Emu
Wangkatha	Karlaya

Word Sleuth

E	C	H	I	D	N	A	C	F	G	H	D	E	T	E	L	W
M	A	A	H	C	G	B	F	X	C	O	Q	D	J	E	K	I
U	F	G	V	U	I	S	T	H	I	N	L	J	I	H	F	T
B	A	W	E	V	N	R	K	Y	D	E	D	O	L	N	M	C
O	L	Q	M	Y	N	H	R	Q	G	Y	P	U	K	V	Z	H
J	R	I	A	X	G	O	A	N	N	A	Z	A	A	N	T	E
O	S	X	R	W	I	W	X	X	G	N	Y	Z	M	I	S	T
P	M	T	L	U	V	N	W	N	U	T	M	X	A	J	A	T
M	A	K	U	E	W	V	R	D	P	S	E	O	R	C	B	Y
I	H	G	F	S	O	U	W	O	A	S	C	R	T	L	T	G
A	N	P	L	L	T	K	B	P	R	V	R	X	A	L	M	R
Y	J	K	L	O	Q	M	B	S	N	A	K	E	O	C	I	U
A	Q	R	S	Z	F	D	P	A	U	Y	V	W	X	Y	N	B
L	A	E	V	O	A	I	Q	P	B	R	S	T	V	S	G	R
R	O	T	U	N	X	N	R	L	S	S	B	D	B	N	A	Q
A	B	V	Z	T	Y	G	A	I	T	V	E	Y	F	W	V	Z
K	A	N	G	A	R	O	O	Y	I	R	L	I	R	L	T	U

- Ant
- Dingo
- Emu
- Echidna
- Goanna
- Honey Ants
- Kangaroo
- Karlaya
- Maku
- Marlu
- Minga
- Nginngi
- Nguparnu
- Snake
- Tjilkamarta
- Witchetty Grub
- Yilpa
- Yirlirltu

Red Kangaroo (Marlu)



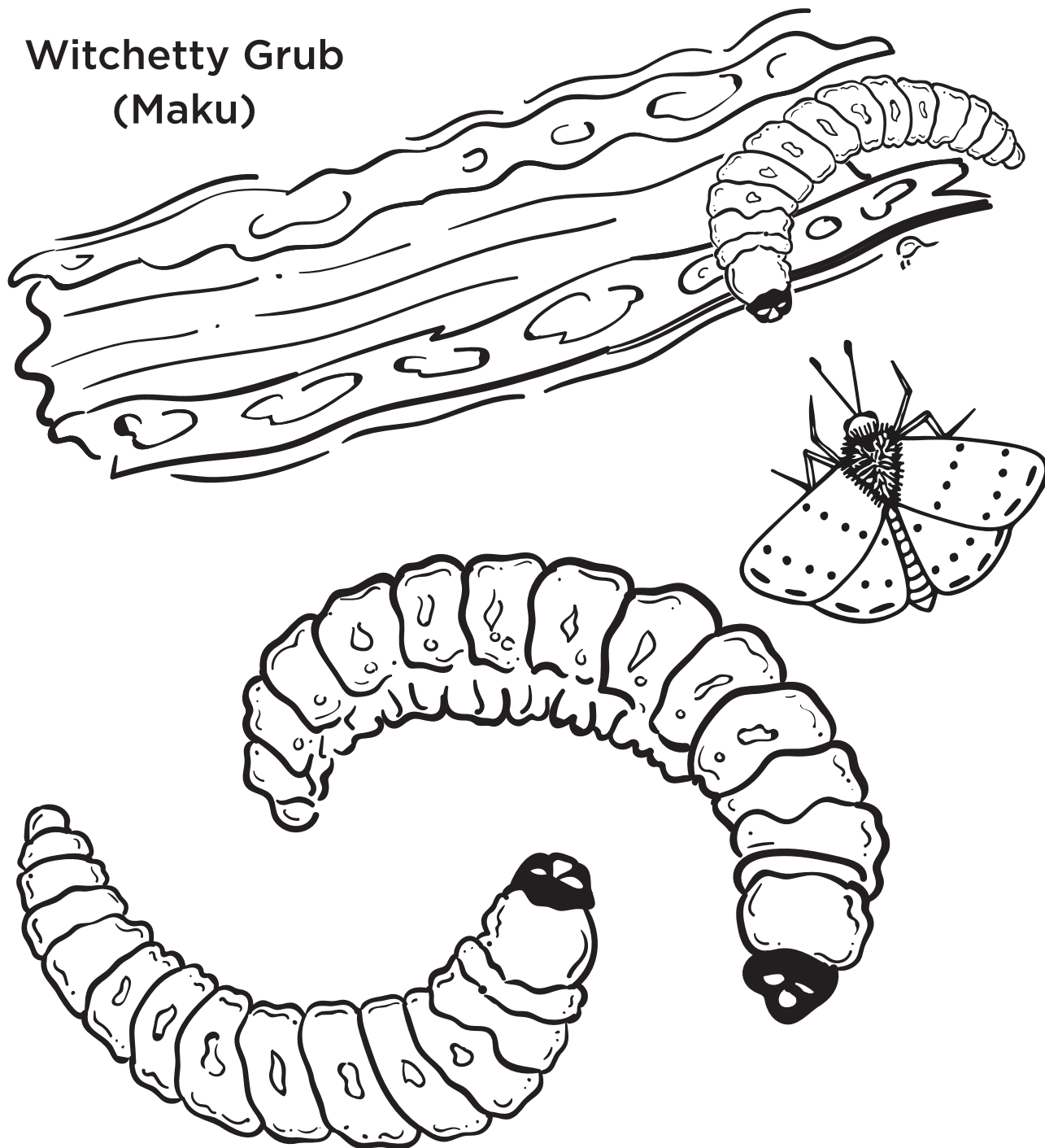
Do you know any other languages? Add the language and word below.

Language	Word
English	Red Kangaroo
Wangkatha	Marlu

Join the Dots



Witchetty Grub (Maku)

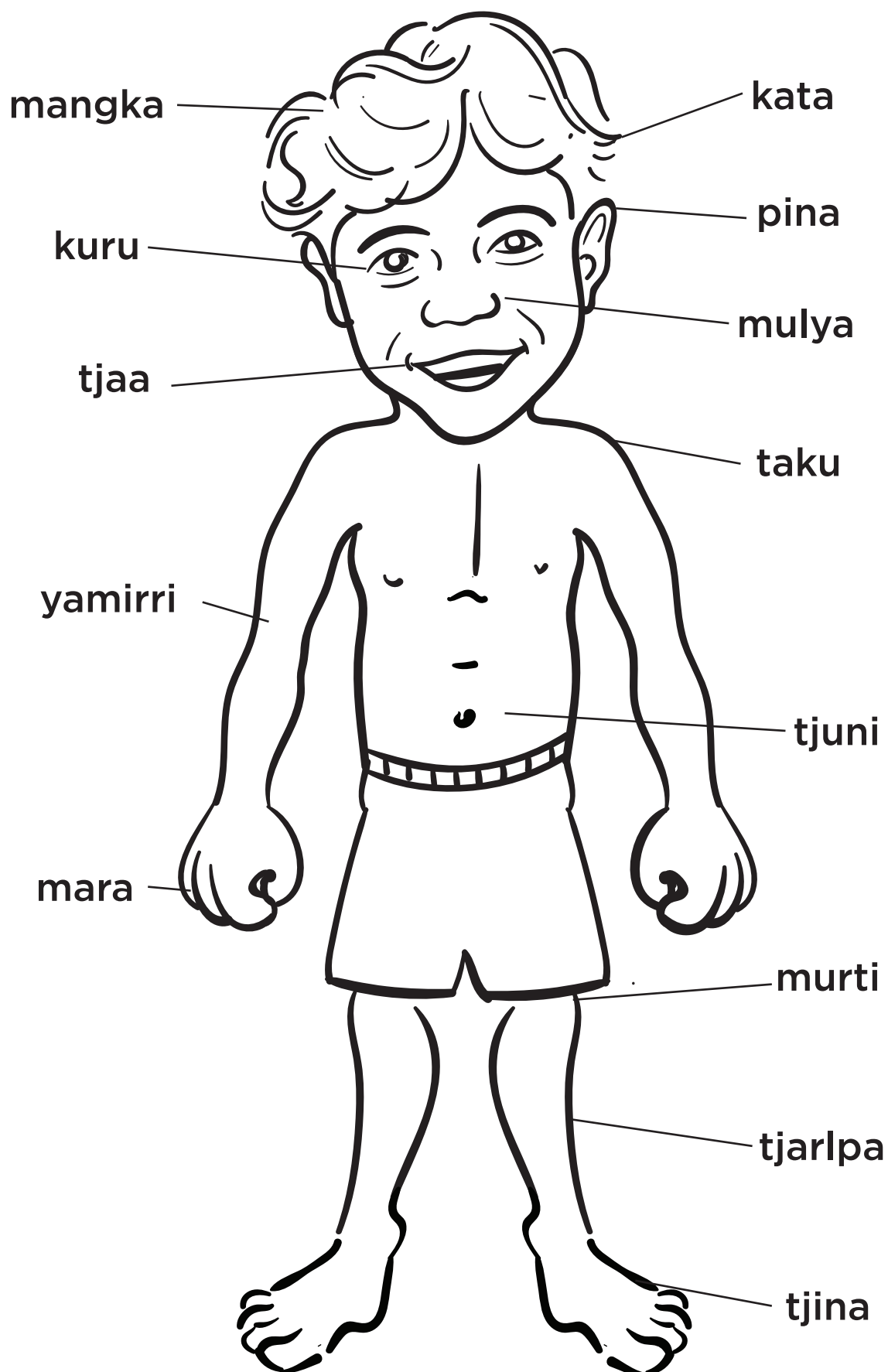


Do you know any other languages? Add the language and word below.

Language	Word
English	Witchetty Grub
Wangkatha	Maku

Draw your own picture

Body Parts



Eyes, Ears, Mouth and Nose

Eyes and ears and mouth and nose

mouth and nose

mouth and nose

eyes and ears and mouth and nose

mouth and nose

mouth and nose

we all clap hands together.

Kuru, Pina, Tjaa, Mulya

Kuru, pina, tjaa, mulya

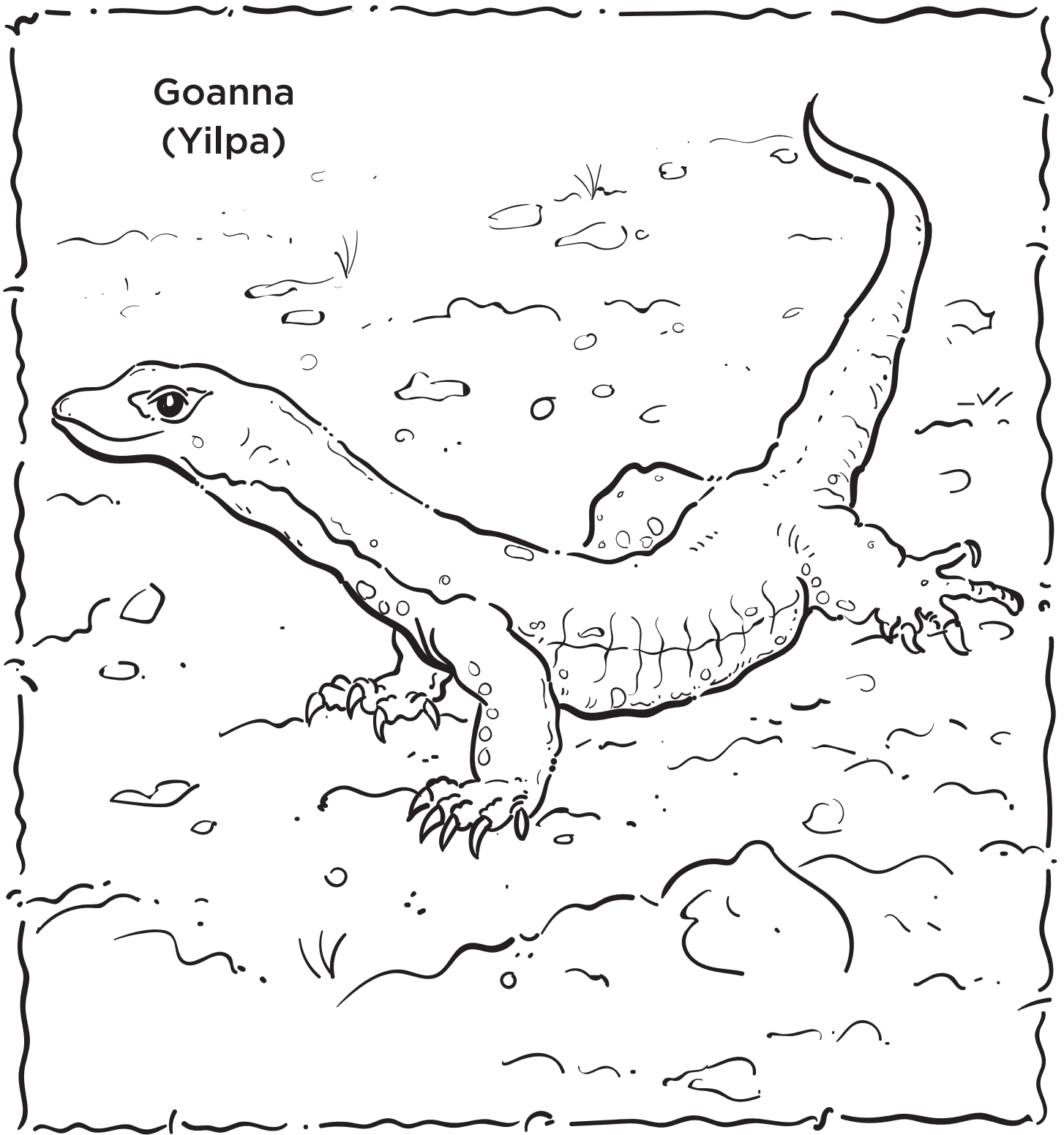
tjaa mulya

tjaa mulya

kuru, pina, tjaa, mulya

we all clap mara together.

**Goanna
(Yilpa)**



Do you know any other languages? Add the language and word below.

Language	Word
English	Goanna
Wangkatha	Yilpa

Quiz

1. What do you call Aboriginal people from the Goldfields?

2. What's the English word for tjina?

3. What's the Wangkatha word for mouth?

4. What's the Wangkatha word for ear?

5. What's the Wangkatha word for emu?

6. What's the English word for yilpa?

7. What's the Wangkatha word for red kangaroo?

8. What's the Wangkatha word for ant?

9. What's the English word for maku?

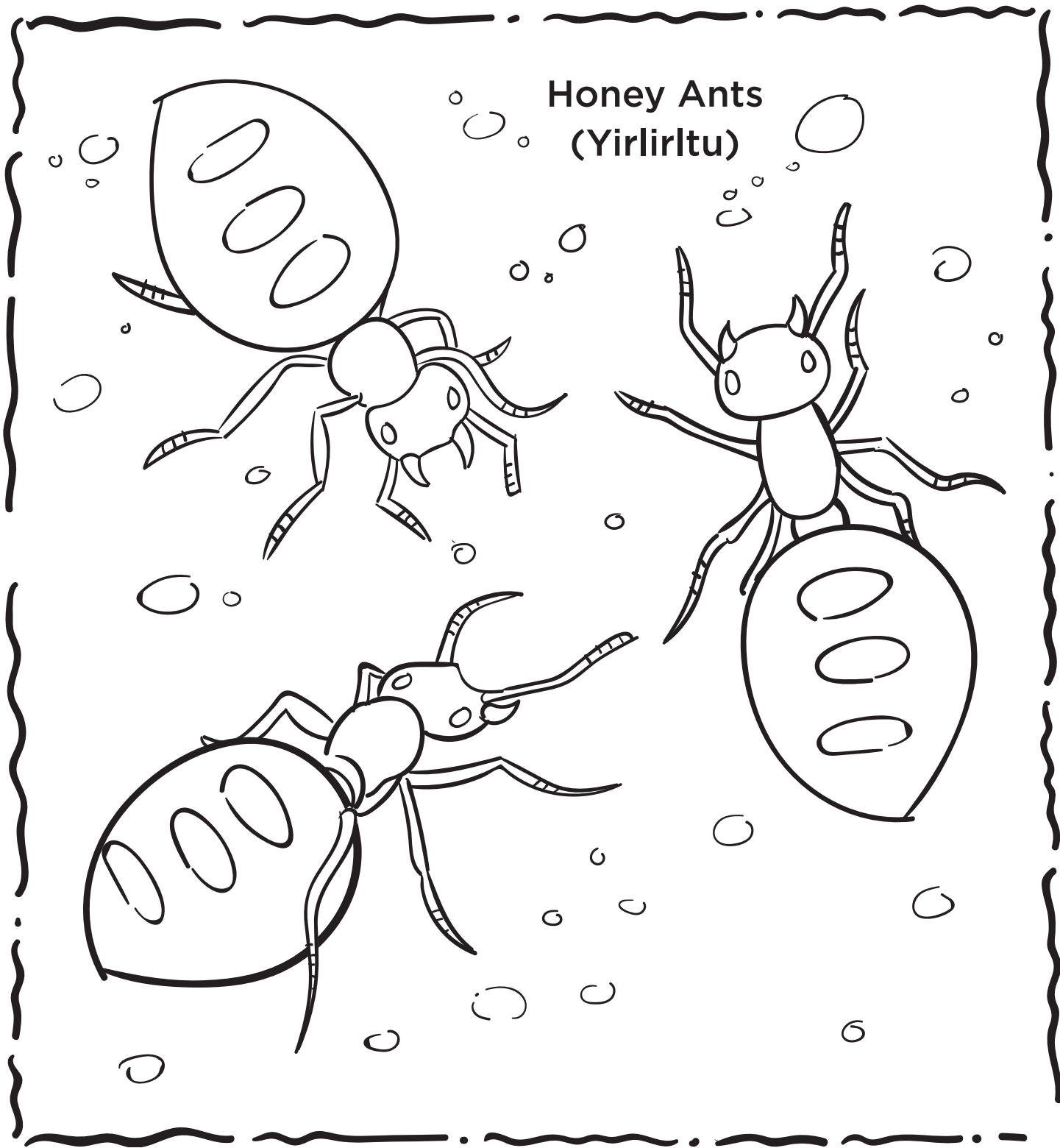
10. What's the English word for mulya?

11. What's the Wangkatha word for hand?

12. What's the Wangkatha word for echidna?

13. What's the English word for kuru?

14. What's the English word for kapi?



Do you know any other languages? Add the language and word below.

Language	Word
English	Honey Ants
Wangkatha	Yirlirltu

Echidna (Tjilkamarta)



Do you know any other languages? Add the language and word below.

Language	Word
English	Echidna
Wangkatha	Tjilkamarta

Wangkatha Hand Gestures



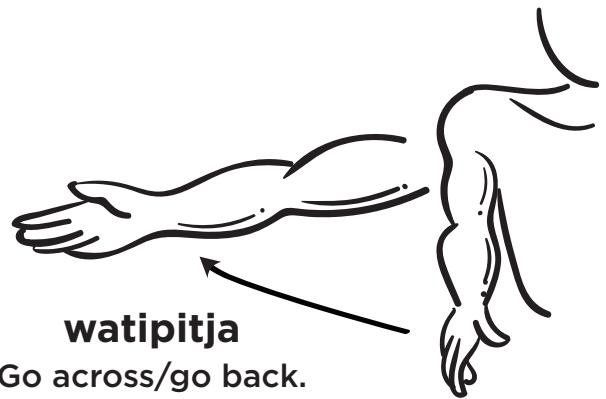
yulara
(Somebody) is crying.



papa
It's a dog.



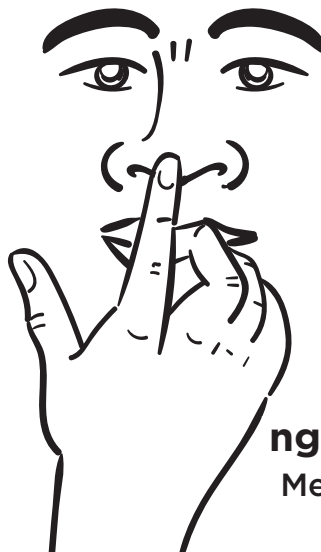
wati yirna
It's an old man.



watipitja
Go across/go back.



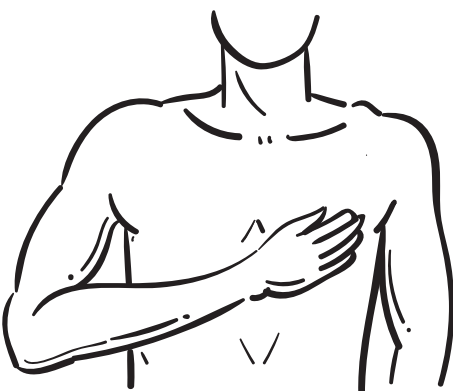
tjikira
Drinking.



ngayuku
Me/mine.



purlkanya
It is big.



ngunyyju
Mother.
(for kapi-Water,
touch both
breasts.)



watl
It's a man.

Wangkatha Hand Gestures



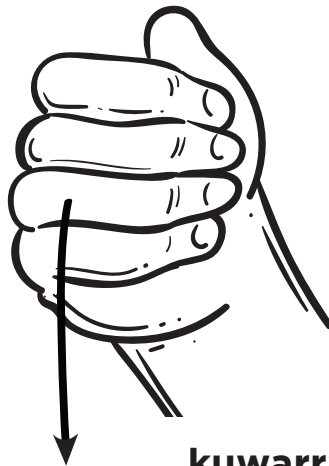
karlaya/tjakiplrri
It's an emu.



mirrirrlngu
He/she/it is dead.



ngirriki
Bardy grubs.



kuwarra
Wait!



kungka
It's a female.



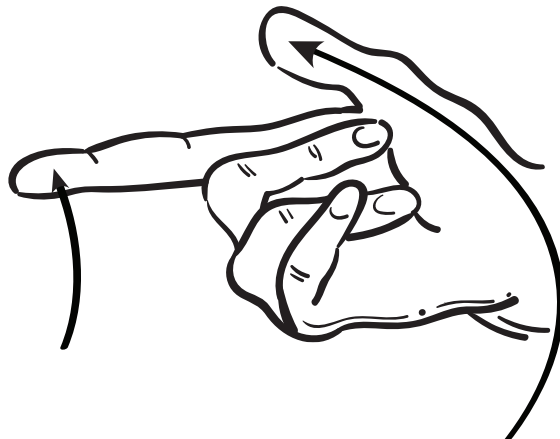
tijitji/tjiku
It's a child.



walykumunu
That's good.



marlu
It's a kangaroo.



Nyaaku?
What for?
What's going on?

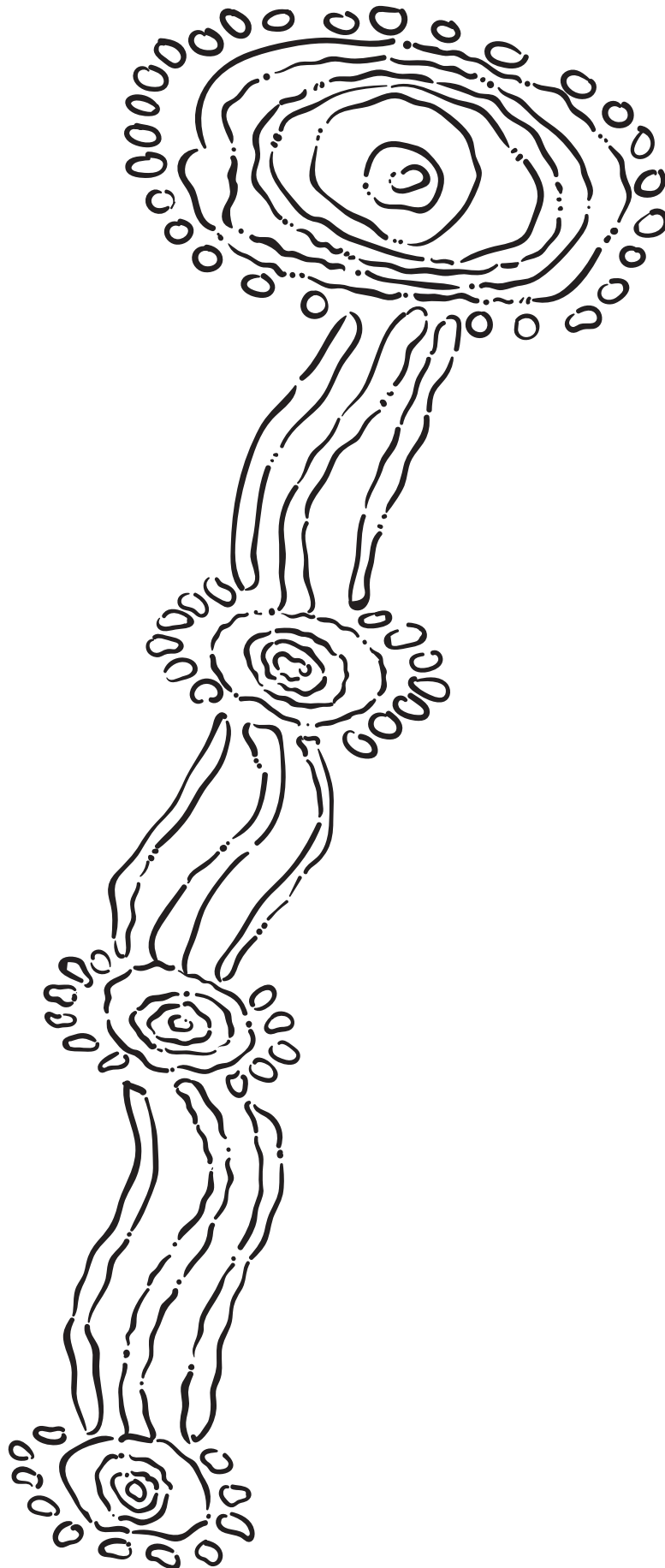
Pink & Grey Galah (Piyarrka)



Do you know any other languages? Add the language and word below.

Language	Word
English	Pink & Grey Galah
Wangkatha	Piyarrka

Long Meeting Place



Answers

Word Sleuth

E	C	H	I	D	N	A	C	F	G	H	D	E	T	E	L	W
M	A	A	H	C	G	B	F	X	C	O	Q	D	J	E	K	I
U	F	G	V	U	I	S	T	H	I	N	L	J	I	H	F	T
B	A	W	E	V	N	R	K	Y	D	E	D	O	L	N	M	C
O	L	Q	M	Y	N	H	R	Q	G	Y	P	U	K	V	Z	H
J	R	I	A	X	G	O	A	N	N	A	Z	A	A	N	T	E
O	S	X	R	W	I	W	X	X	G	N	Y	Z	M	I	S	T
P	M	T	L	U	V	N	W	N	U	T	M	X	A	J	A	T
M	A	K	U	E	W	V	R	D	P	S	E	O	R	C	B	Y
I	H	G	F	S	O	U	W	O	A	S	C	R	T	L	T	G
A	N	P	L	L	T	K	B	P	R	V	R	X	A	L	M	R
Y	J	K	L	O	Q	M	B	S	N	A	K	E	O	C	I	U
A	Q	R	S	Z	F	D	P	A	U	Y	V	W	X	Y	N	B
L	A	E	V	O	A	I	Q	P	B	R	S	T	V	S	G	R
R	O	T	U	N	X	N	R	L	S	S	B	D	B	N	A	Q
A	B	V	Z	T	Y	G	A	I	T	V	E	Y	F	W	V	Z
K	A	N	G	A	R	O	O	Y	I	R	L	I	R	L	T	U

- Ant
- Dingo
- Emu
- Echidna
- Goanna
- Honey Ants
- Kangaroo
- Karlaya
- Maku
- Marlu
- Minga
- Nginngi
- Nguparnu
- Snake
- Tjilkamarta
- Witchetty Grub
- Yilpa
- Yirlirltu

Quiz

1. Wangkathas
2. Foot
3. Tjaa
4. Pina
5. Karlaya

6. Goanna
7. Marlu
8. Minga
9. Witchetty grub
10. Nose

11. Mara
12. Tjilkamarta
13. Eye
14. Water



GOING ON A JOURNEY

Deanne Williams
Community Engagement Officer

T 08 9021 1333
E deanne.williams@abilitycentre.com.au
42 Wilson Street, Kalgoorlie WA 6430
(Kalgoorlie-Boulder Lotteries House)

Penny Evans
Community Engagement Officer

T 08 9021 1333
E penny.evans@abilitycentre.com.au
42 Wilson Street, Kalgoorlie WA 6430
(Kalgoorlie-Boulder Lotteries House)

Dr Jillian Pearsall-Jones
Project Leader

T 08 9443 0249
E jillian.pearsall-jones@abilitycentre.com.au
106 Bradford Street, Coolbinia WA 6050
(Ability Centre)

Caris Jalla
Project Officer

T 08 9443 0294
E caris.jalla@abilitycentre.com.au
106 Bradford Street, Coolbinia WA 6050
(Ability Centre)

Part of the



Leaders in Disability.
Specialists in
Cerebral Palsy.

An initiative of Ability Centre