

# NATSINSAP Increased workforce capacity: Qld case study

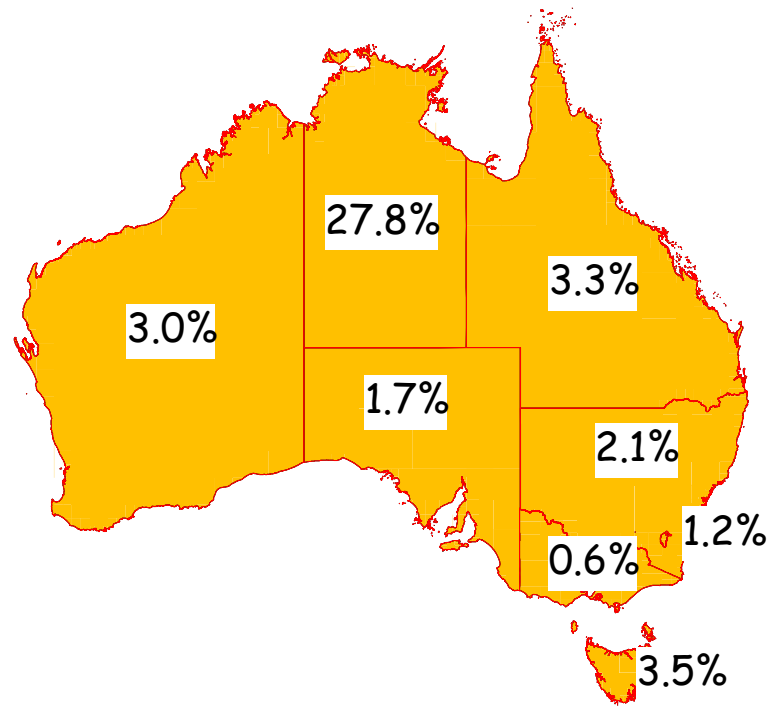


National Nutrition Networks  
Alice Springs March 2008



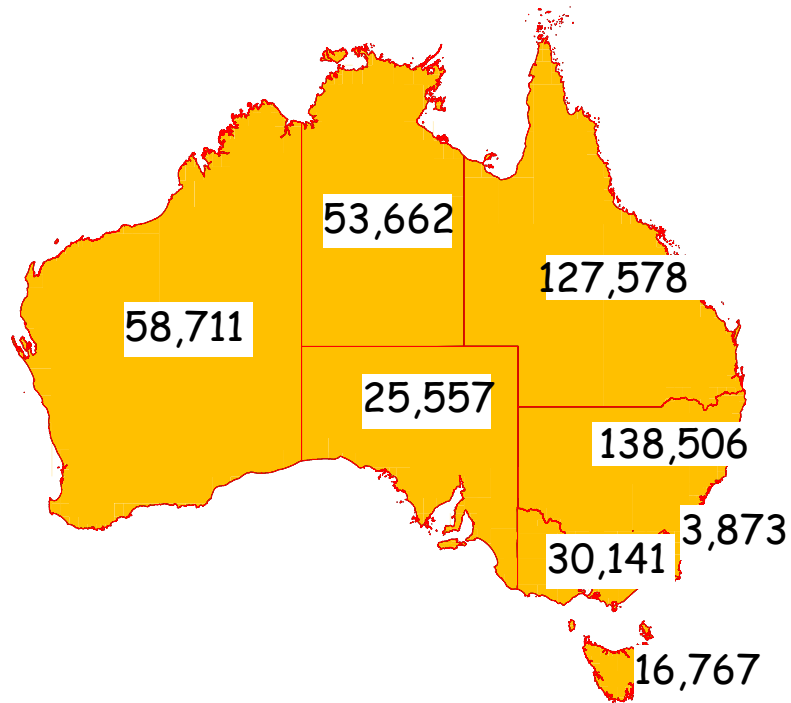
Queensland  
Government  
Queensland Health

# Aboriginal & Torres Strait Islander Population



Source: ABS Census 2006

# Aboriginal & Torres Strait Islander Population



Source: ABS Census 2006



# Aboriginal and Torres Strait Islander nutrition workforce capacity

- increased number of Aboriginal and Torres Strait Islander people in the nutrition workforce
- increased non-Indigenous nutrition workforce contributing to Aboriginal and Torres Strait Islander health
- increased nutrition competencies of the broader Aboriginal and Torres Strait Islander health workforce
- increased Aboriginal and Torres Strait Islander nutrition competencies for all health workforce

# Qld Aboriginal and Torres Strait Islander nutrition staff



MARCH 2002

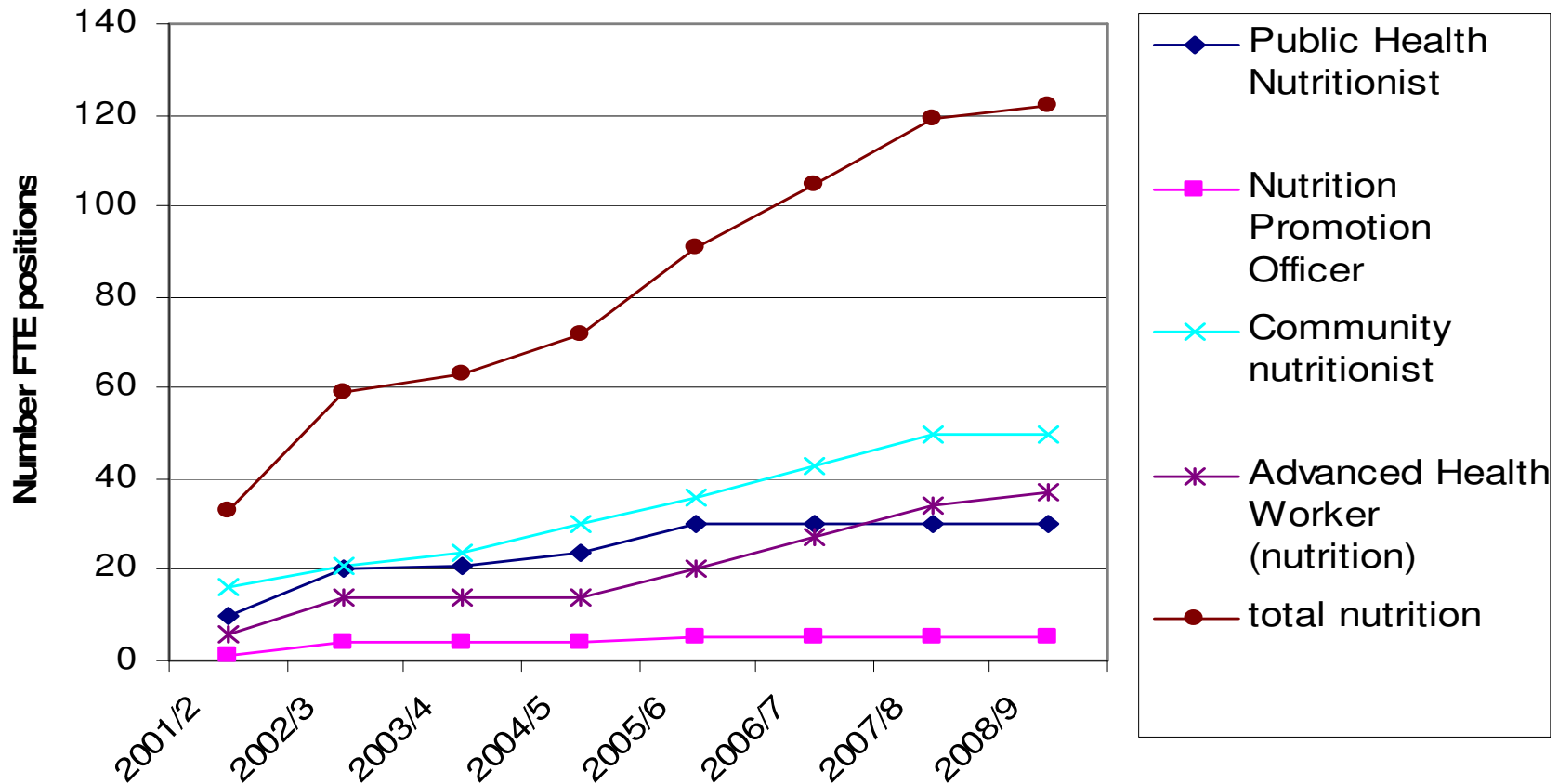
- **4.5** Indigenous nutrition staff
- **4.5 FTE** per 100,000 Indigenous population
- **4 FTE** non-Indigenous staff focusing on Aboriginal and Torres Strait Islander nutrition issues

MARCH 2008

- **44** Indigenous nutrition staff
- **35.2 FTE** per 100,000 Indigenous population
- **18 FTE** non-Indigenous staff focusing on Aboriginal and Torres Strait Islander nutrition issues
- \$ for another 29 positions by end 2009

# Increase in the number of Qld Indigenous nutrition positions

Public health & community nutrition workforce,  
Queensland



# Qld investment in Aboriginal and Torres Strait Islander nutrition

- 50% staff numbers
- 30% of staff budget (\$M 5.1 pa)
- >40% nutrition program budget (\$M 6.8 pa)
- National contributions eg Major funder of RIST



Just 30 minutes of activity a day for adults and 60 minutes for kids!

Eat Well Be Active

Eat Well, Be Active, Live Strong.

www.eatwellbeactive.qld.gov.au

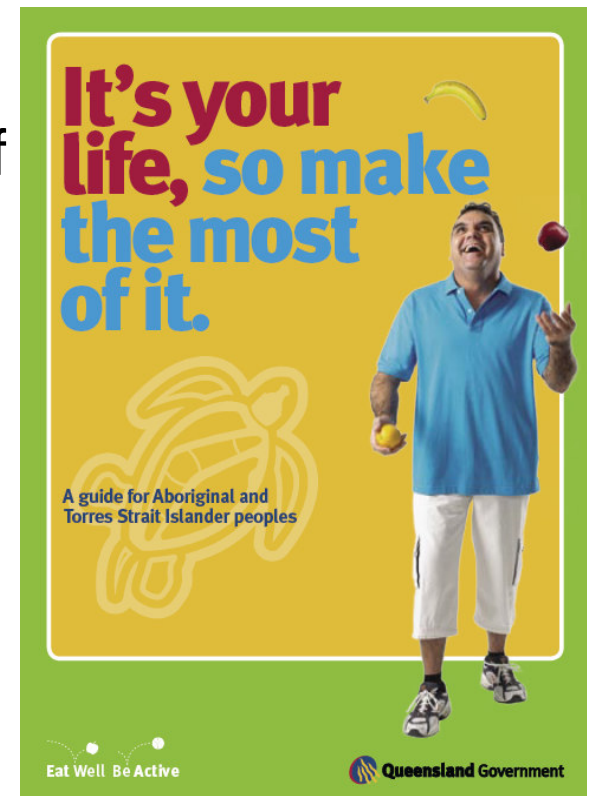
Go for 2&5  
2 serves fruit and 5 serves of vegies every day.

www.eatwellbeactive.qld.gov.au

Queensland Government

# Qld investment in Aboriginal and Torres Strait Islander nutrition

- All work guided by NATSINSAP and QATSINSAP Action Areas; consistent with A&TSI workforce national strategic framework
- Enhanced project reach and “dose”
- Increased response to local needs
- Professional recognition for ALL staff
- Cultural competency and understanding of Aboriginal and Torres Strait Islander nutrition issues is a requirement for ALL staff
- Tender Cert IV training
- “2-way” partnership approach



# Key Enablers

- Supportive political environment
- Supportive policy context:
  - health equity
  - focus on prevention and promotion
- Clear vision
- NATSINSAP and QATSIFNS
- Champions and Advocacy
- Leadership
- Evidence-based business planning



# Challenges

- Competencies; Qualifications and Training:
  - VET cert III (practice; community stream)
  - VET cert IV
  - Tertiary sector
- Lack of scholarships, cadetships, bursaries
- Recruitment and retention
- Professional development
- Meeting community expectations
- Lack of data



# THANK YOU

**For more information:**

“Expansion of the Indigenous nutrition workforce in Qld”

Concurrent session B

